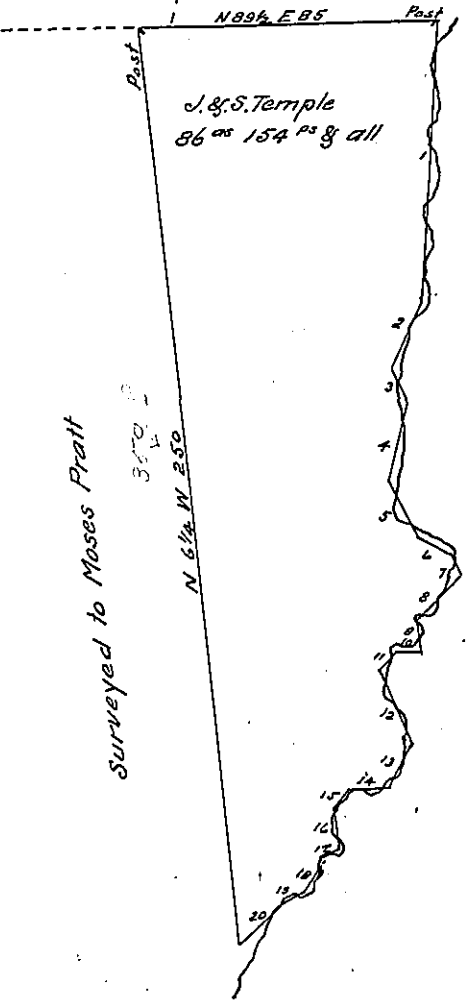


Land of John Temple

Land of David Vincent



- Courses & distances down Run
- No. 1. S 3 1/2 W. 74.4. Jack, ok. sapling ✓
 - " 2. S 23 1/4 W 21.1. Maple ✓
 - " 3. S. 31 E 8.6. W. Bagch ✓
 - " 4. S. 14 1/2 W 21.5. Post ✓
 - " 5. S. 29 E 16.7. Birch ✓
 - " 6. S 59 E 12.5 Birch ✓
 - " 7. S 27 E 5.7 ✓
 - " 8. S 47 W 11.2 Post ✓
 - " 9. S 8 E 9.5 Birch ✓
 - " 10. N 88 1/2 W 6.4. June Berry ✓
 - " 11. S 45 W 8.3 ✓
 - " 12. S 14 E 21.5. Maple ✓
 - " 13. S 30 W 14.5 ✓
 - " 14. S 86 W 11.3 Iron Wood ✓
 - " 15. S 37 W 6.3 Birch ✓
 - " 16. S 16 E 11.3 Post ✓
 - " 17. S 71 W 6. Post ✓
 - " 18. S 27 1/2 W. 10 ✓
 - " 19. S 67 W. 5.8 White. Ok ✓
 - " 20. S 46 W. 16.9. Post ✓

Draft of a tract of land situate partly in Sandy Creek and partly in French Creek Townships Venango County
 Surveyed February 15th 1865 for John Temple in pursuance of a warrant granted to him dated
 30th day of September A.D. 1864

Hon. J. P. Barr

Wm. Hilands

Surveyor Genl

C. S.

IN TESTIMONY that the above is a copy of the original remaining on file in the Department of Internal Affairs of Pennsylvania, made conformably to an Act of Assembly approved the 16th day of February, 1833, I have hereunto set my Hand and caused the Seal of said Department to be affixed at Harrisburg, this

eighteenth day of June

1908

Henry Houck
 Secretary of Internal Affairs.